

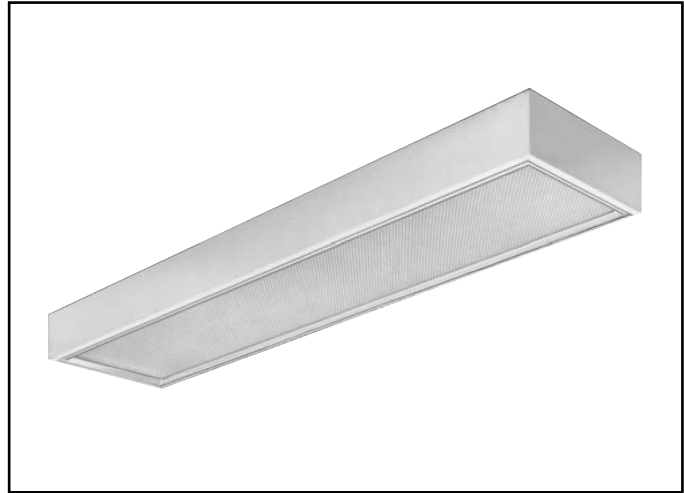
GUARDSMAN GVB SERIES 1X4

Page 1 of 2

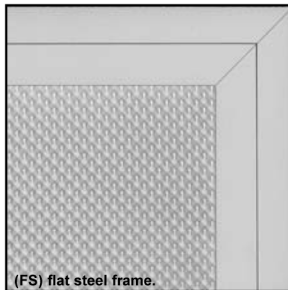
VANDAL RESISTANT 1'x4' SURFACE BOX FLUORESCENT
1 OR 2 LAMP, T8

Features

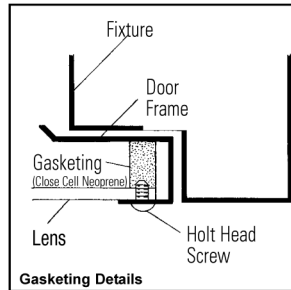
- Excellent for locations where vandal resistance is required.
- 20 gauge steel body.
- Prismatic lens is 3/16" thick, pattern 12, minimum impact strength, 130 foot pounds.
- Full perimeter gasketing (closed cell Neoprene) between door frame and lens.
- Tamper resistant holt head screws secure lens to housing.
- 45° mitered corners (body and door frame).
- Only 5-1/2" deep.
- 54.9% efficient (2 lamp T8).
- Side mounted ballast for cooler operation.
- Fully enclosed wiring.



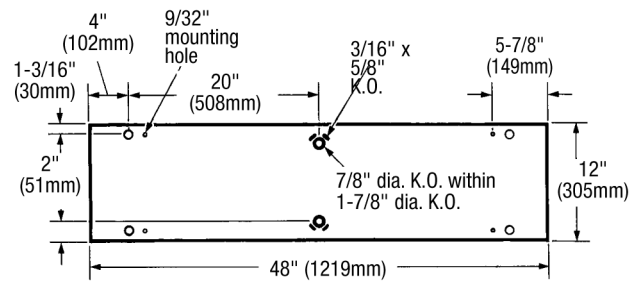
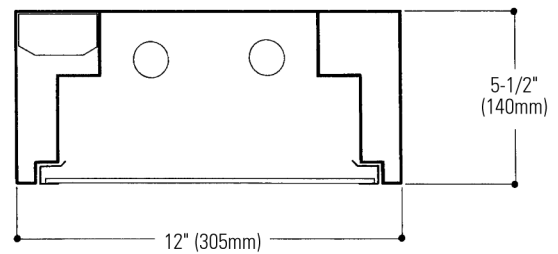
Mounting Methods / Features



(FS) flat steel frame.



Dimensions



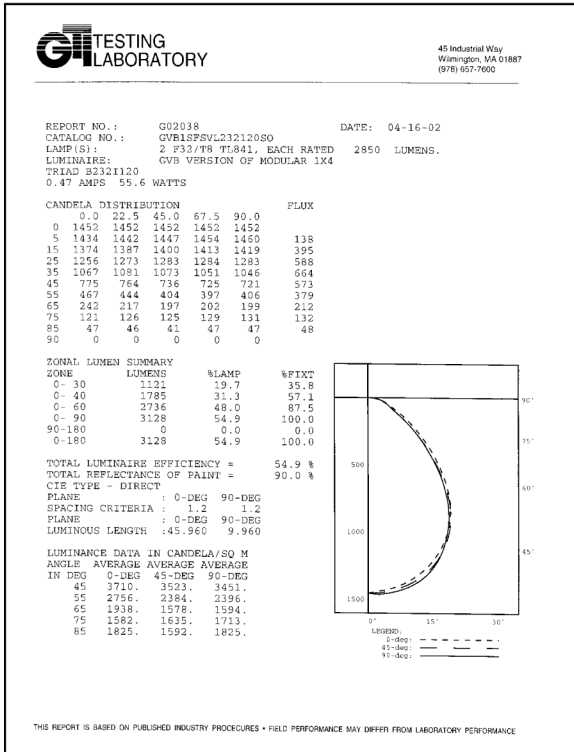
FIXTURE TYPE	VOLTS
JOB INFORMATION: _____	

GUARDSMAN GVB SERIES 1X4

Page 2 of 2

VANDAL RESISTANT 1'x4' SURFACE BOX FLUORESCENT
1 OR 2 LAMP, T8

PHOTOMETRY



MODEL NO. GVB1SFSVL232120S0

coefficients of utilization — zonal cavity method

RF	20	20	20
RC	80	50	30
RW	70	50	30
1	60	58	56
2	56	52	48
3	51	46	42
4	48	42	37
5	44	38	33
6	41	34	30
7	38	31	27
8	36	29	24
9	33	26	22
10	31	25	20

visual comfort probability

room size		ceiling height				ceiling height			
W	L	8.5	10.0	13.0	16.0	8.5	10.0	13.0	16.0
20	20	69	73	78	83	70	75	80	84
20	30	62	66	70	74	62	67	73	77
20	40	58	61	66	69	59	62	68	72
20	60	55	58	62	65	54	58	62	66
30	20	69	74	78	82	70	75	80	83
30	30	62	66	70	74	62	66	72	76
30	40	57	61	65	68	57	61	66	70
30	60	54	57	60	63	53	56	60	64
30	80	52	55	55	60	52	54	56	60
40	20	70	75	79	82	71	76	80	83
40	30	63	67	71	74	63	67	72	76
40	40	58	61	65	68	57	61	65	69
40	60	54	57	59	62	53	56	59	63
40	80	52	54	56	59	52	54	55	59
40	100	52	53	54	56	51	53	53	56
60	30	64	67	71	74	64	68	72	76
60	40	59	62	65	68	58	61	65	69
60	60	54	57	58	62	54	56	58	62
60	80	52	54	55	58	52	53	54	58
60	100	52	53	53	55	51	52	52	55
100	40	62	64	66	70	61	64	67	71
100	60	57	59	60	63	57	58	59	63
100	80	55	56	56	59	54	55	55	58
100	100	54	54	53	56	53	53	53	54

Ordering Information Explanation of Catalogue Number Example: GVB1SFSVL232120S0

GV	B	1	S	FS	VL	2	32	120	S0	OPTIONS
GUARDSMAN VANDAL RESISTANT	BODY STYLE Surface Box	FIXTURE WIDTH	CEILING TYPE S= Surface	LENS FRAME FS= Flat steel frame	LENS/ SHEILDING TYPE VL=High impact .187 thick Prismatic Lens	LAMP QUANTITY 1 or 2 lamps	LAMP/FIXTURE LENGTH 32=T8 (Nominal 48")	VOLTAGE 120 OR 277	BALLAST TYPE 20THD S0* PS Instant Start Standard	Add appropriate suffix to catalog no.

OPTIONS/ACCESSORIES

FUSING: Internal fast-flow fusing.
SUFFIX: F.
ELECTRICAL/WIRING OPTIONS: Consult factory.

SPECIFICATIONS

MATERIALS: Chassis parts are die-formed 20 gauge cold rolled steel, stud welded for rigidity.
Lens Frame (FS) flush full-size steel frame.
FINISH: Chassis exterior—white baked acrylic enamel. Cavity—white baked acrylic enamel
minimum reflectance 86%. Phosphate undercoating. Lens (VL) prismatic lens, 3/16" thick, pattern
12, minimum impact strength, 130 foot pounds.
ELECTRICAL: Thermally protected class "P" ballast C.B.M. approved, non PCB. If K.O. is within
3" of ballast, use wire suitable for at least 90°.
LABELS: I.B.E.W./UL and ULc Listed.

Job Information

Type:

Lightolier a Genlyte Thomas Company
Technical Information: (978) 657-7600 - (978) 658-0595
631 Airport Road, Fall River, MA 02720 - (508) 679-8131
C.F.I. Division of Canlyte, Inc.
525 Education Road, Cornwall, Ontario, Canada K6H 6C7 - (613) 938-6221
We reserve the right to change details of design, materials and finish.
© 2005 Genlyte Thomas Group LLC (Lightolier Division)
A0902 **Section 6 / Folio U-P40-10**

CFI FLUORESCENT